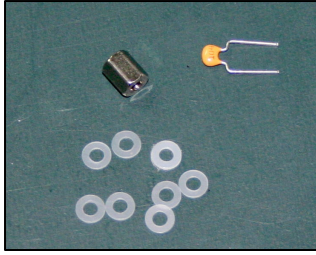
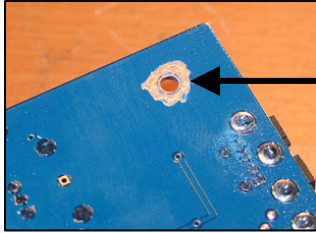


NUE-PSK Modem Kit: Assembly Addendum



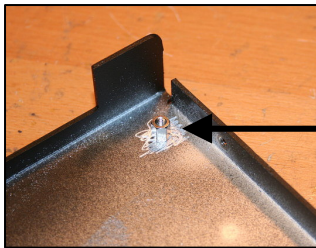
Extra parts supplied in the Modem Kit:

- 1) 0.1 uF disc filter capacitor
- 2) Aluminum spacer (1/4")
- 3) Eight nylon washers

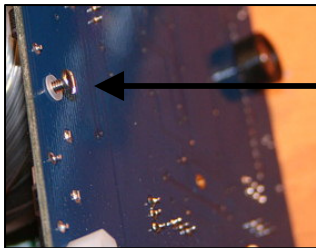


Chassis Grounding Mod:

- 1) Scrape or grind off the blue solder mask on the bottom side of the pcb, at the mounting hole closest to the J2 Keyboard connector

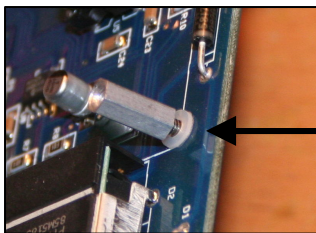


- 2) Scrape or grind the inside of the chassis for the hole corresponding to that same mounting hole. This will then make good electrical contact with the aluminum 1/4" spacer provided



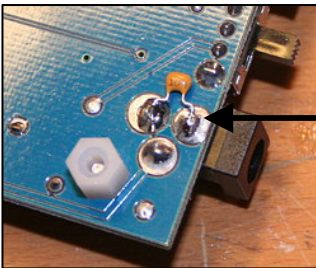
Insulate the metal spacers used for LCD: (Only if metal spacers are provided.)

- 1) Place a nylon washer on the screw before inserting it from the bottom side of the pcb.



- 2) Place another nylon washer on the screw as it protrudes through to the top side of the pcb. Then place the metal standoff on the screw and tighten it down.

- 3) Do this for the other three screws/metal standoffs.



Add filter cap across power jack pads

See further details online at www.nue-psk.com/mods
Questions: Contact us at support@nue-psk.com